



# Bush Prairie Habitat Conservation Plan

Stakeholder Meeting, March 29, 2019

# Welcome & Agenda

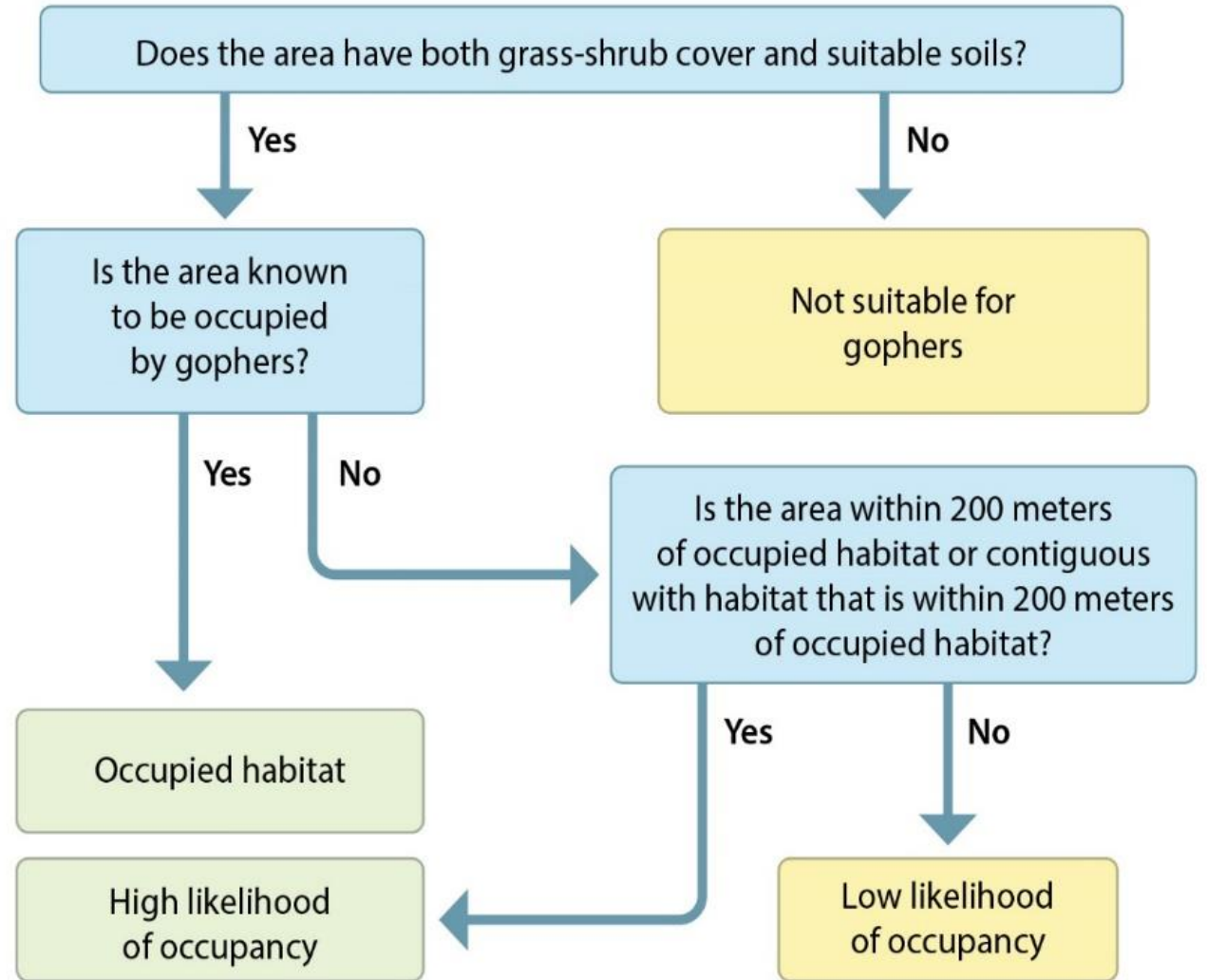
- Meeting overview & introductions
- Phase 2 project schedule & activities
- Topics for input
- Schedule & next steps



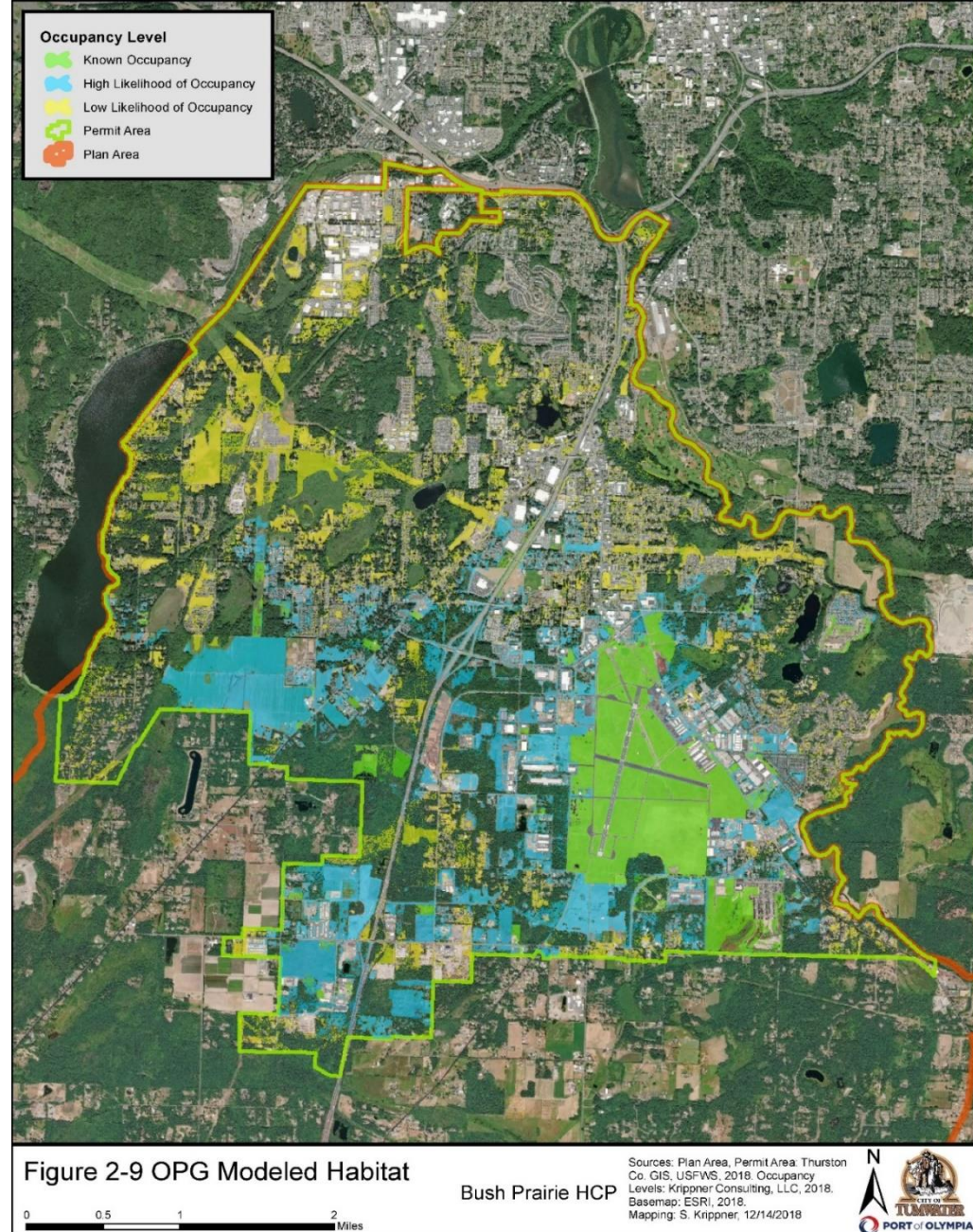
## Phase 2 Project Activities

- Developing current understanding of covered species distribution
- Working with USFWS and WDFW to refine that information
- Estimating potential effects on covered species from covered activities
- Starting to develop implementation strategy

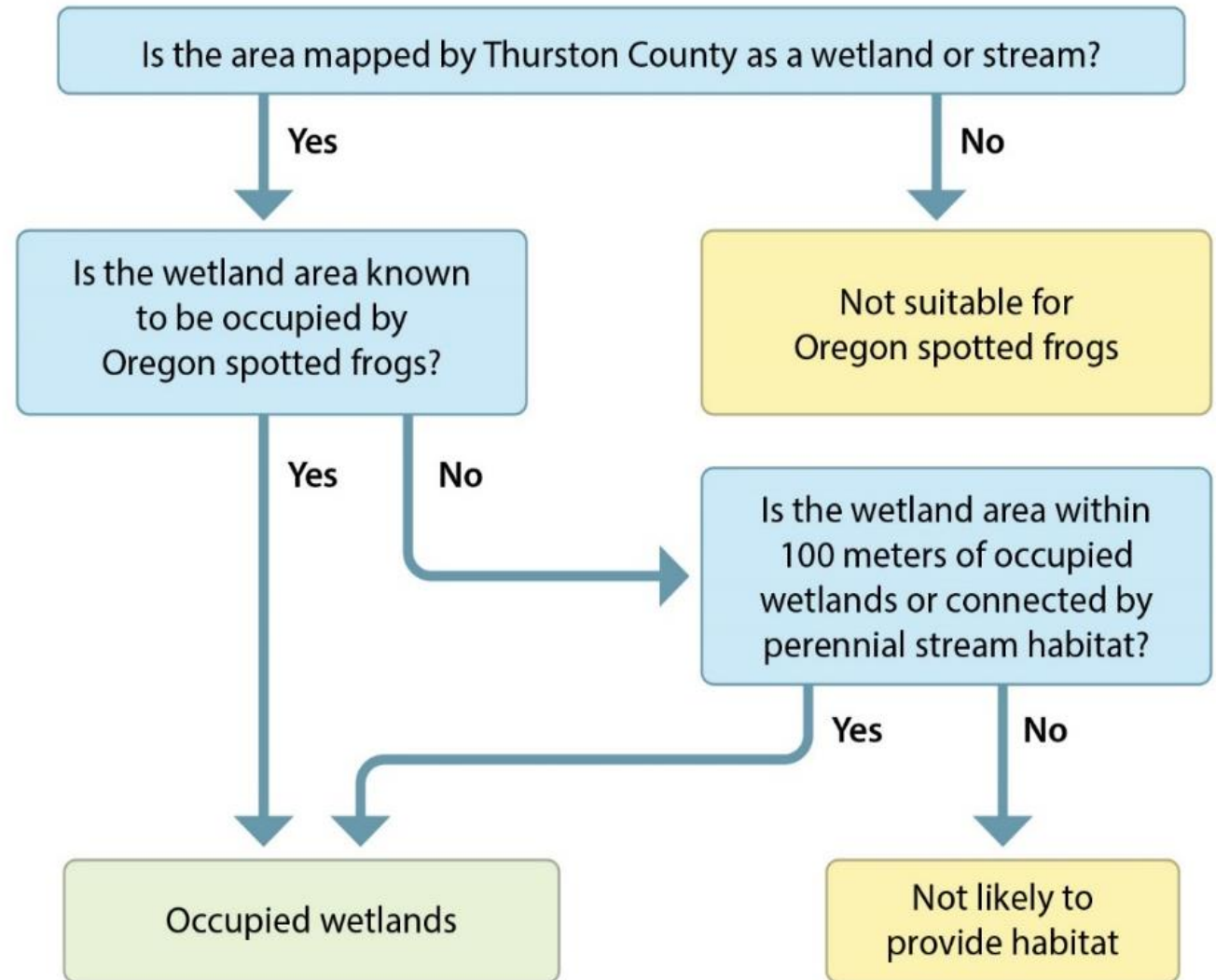
# Draft Covered Species Habitat



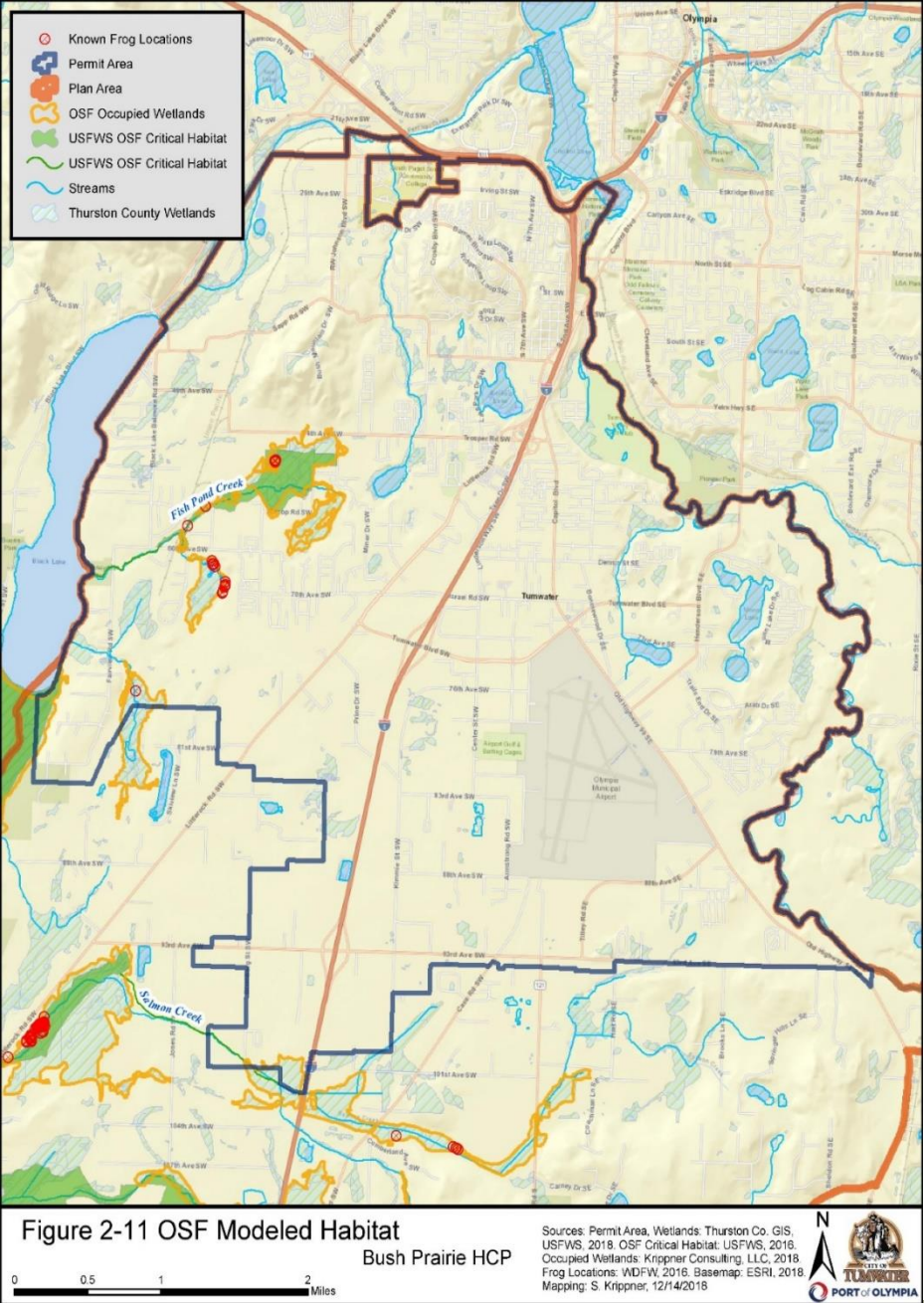
# Draft Covered Species Habitat



# Draft Covered Species Habitat



# Draft Covered Species Habitat



# Draft Covered Species Habitat



- Used known occurrences
- Included adjacent lands with short grassland vegetation

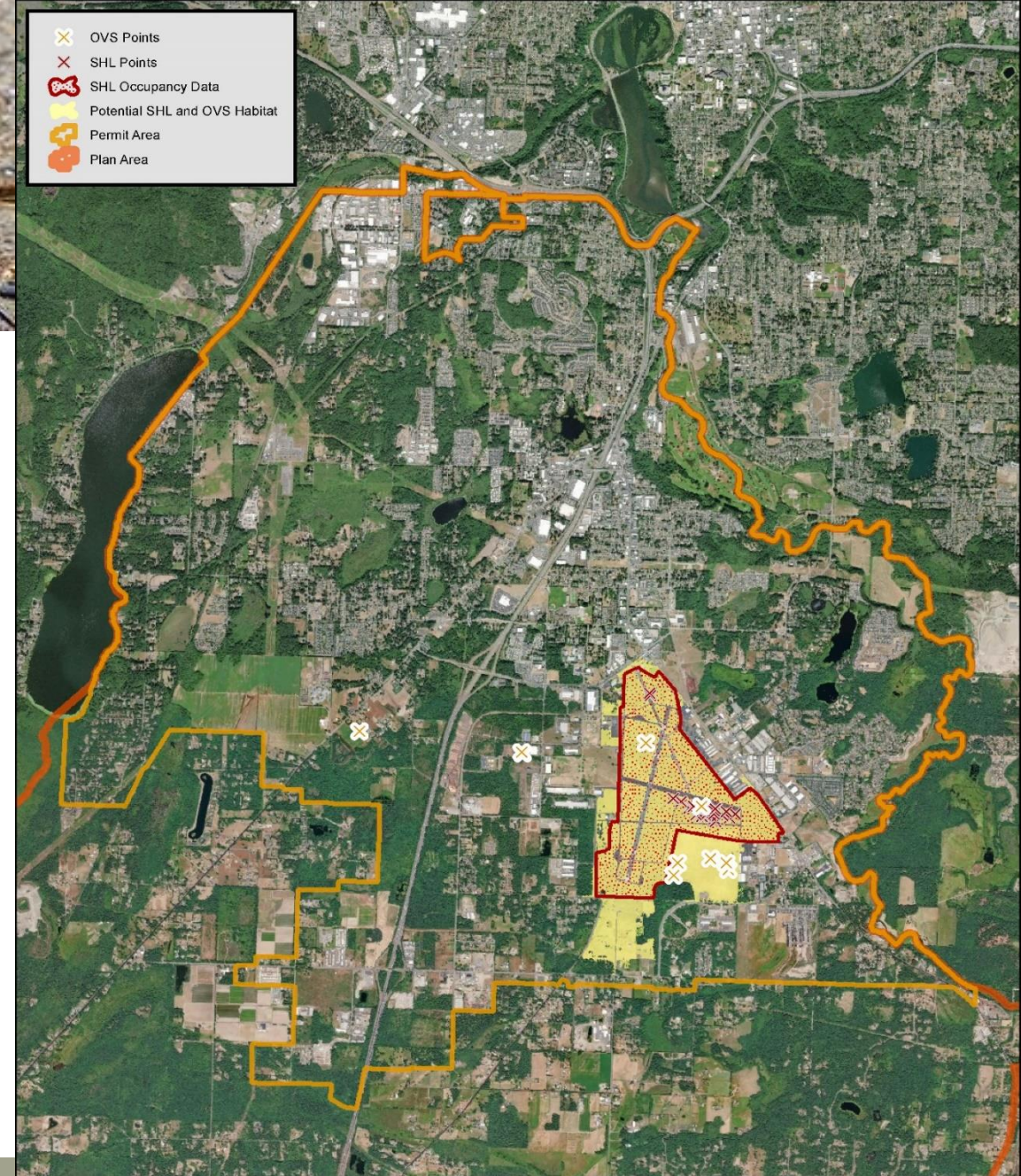
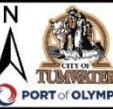


Figure 2-12 SHL and  
OVS Modeled Habitat

Bush Prairie HCP

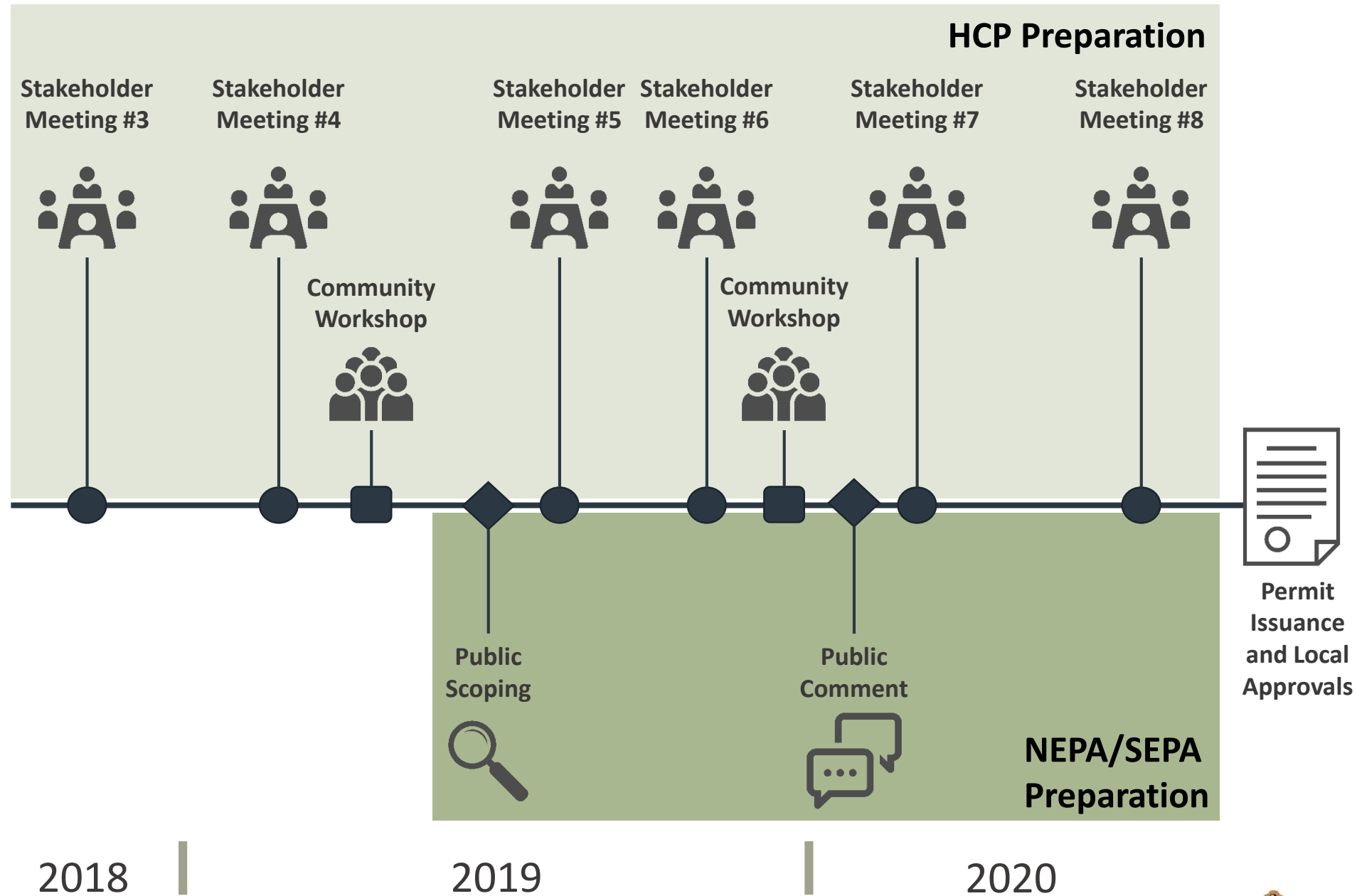
Sources: Permit Area: Thurston Co. GIS, USFWS, 2018. Species Polygons and Points: WDFW, 2016. Potential Habitat: ICF, Krippner Consulting, LLC, 2018. Basemap: ESRI, 2018. Mapping: S. Krippner, 12/14/2018



## Questions for Discussion

- **Conservation Land Management** - What concerns, requests, or suggestions do you have, related to conservation land management under the HCP?
- **Land Owner Responsibilities** - Any questions or concerns related to land owner responsibilities under the HCP?
- **Project Coverage** - Any concerns about the types of projects that will be covered under the HCP?
- **Best Available Information** - Any suggestions about data or information that should be used for the HCP?
- **Incorporating Notable Expertise** - Any concerns or suggestions related to the expertise we're bringing into this process (land management, species)?

# Timeline



## What's Next?

- Continue to develop the draft HCP document
- Continue coordination with USFWS and WDFW
- Finalize take estimates and conservation need
- More fully develop implementation structure
- Next stakeholder meeting late summer/early fall