



Bush Prairie Habitat Conservation Plan

Stakeholder Meeting, November 14, 2019



- Meeting overview and introductions
- Phase 2 project activities
- Schedule and next steps

Welcome & Agenda



- Updated land cover mapping
- Slight modifications to species habitat distribution models
- Estimating potential effects on covered species from covered activities

Phase 2 Project Activities

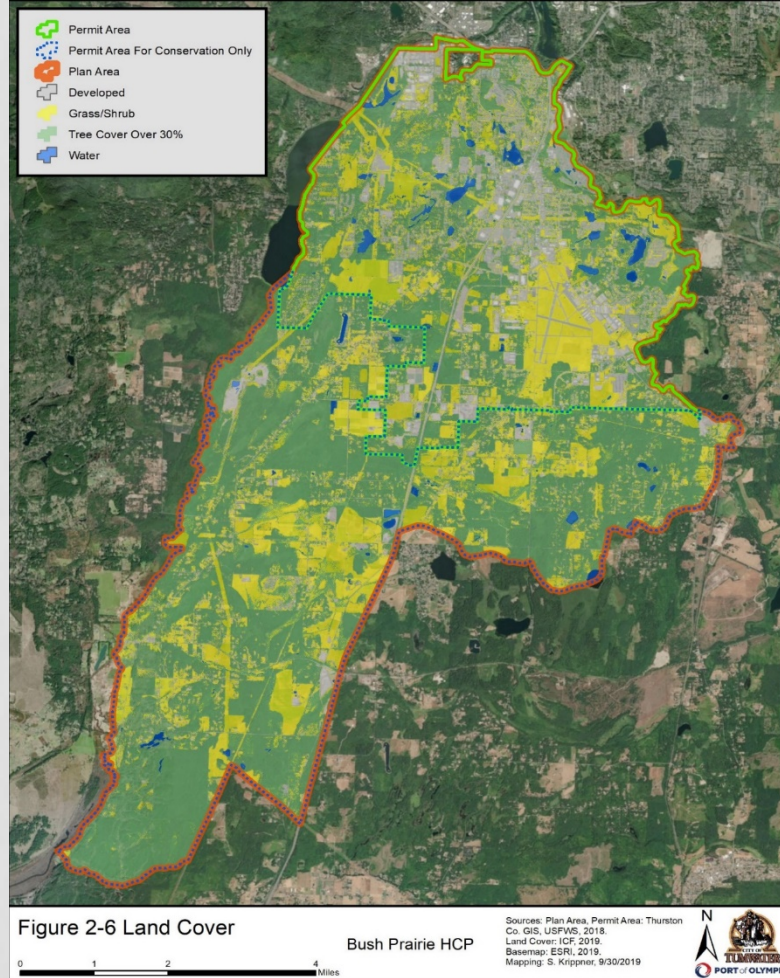


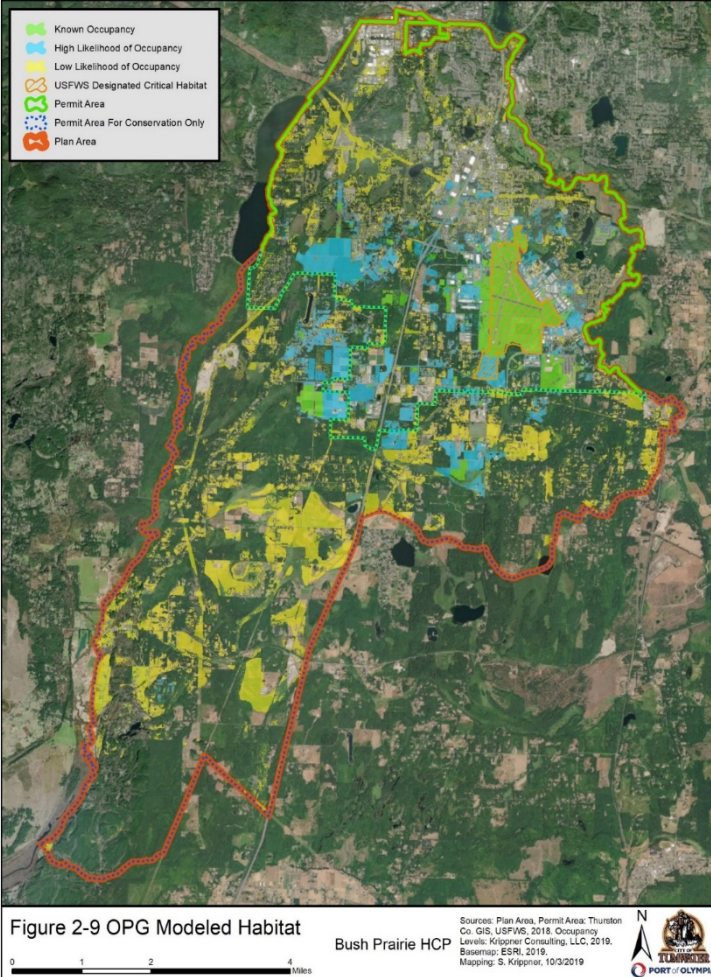
- Determining conservation actions and management needs
- Starting to develop implementation strategy
- Beginning cost and funding analysis

Phase 2 Project Activities

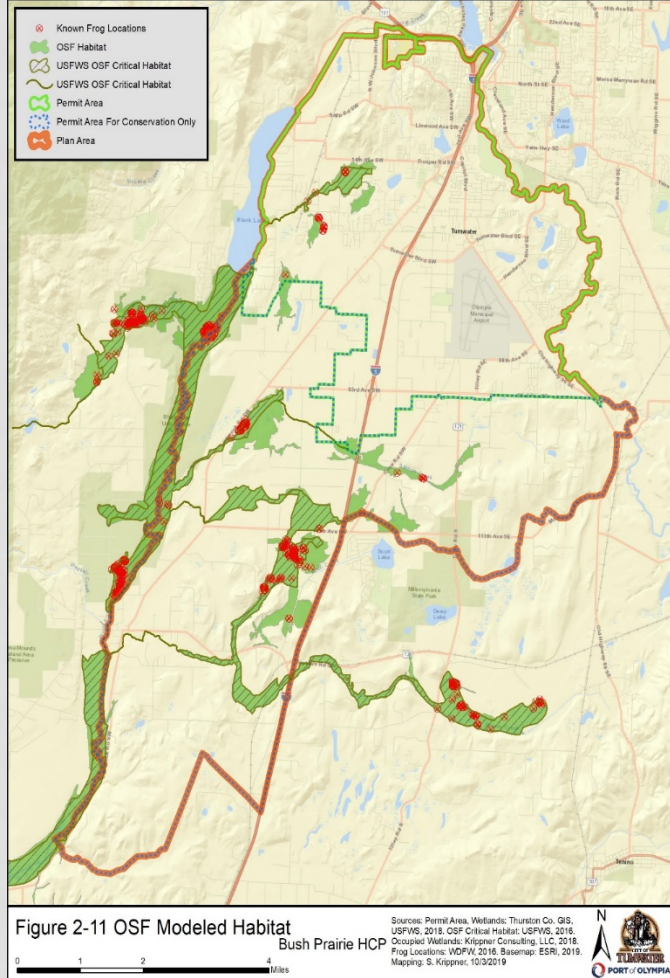


Updated Land Cover Data





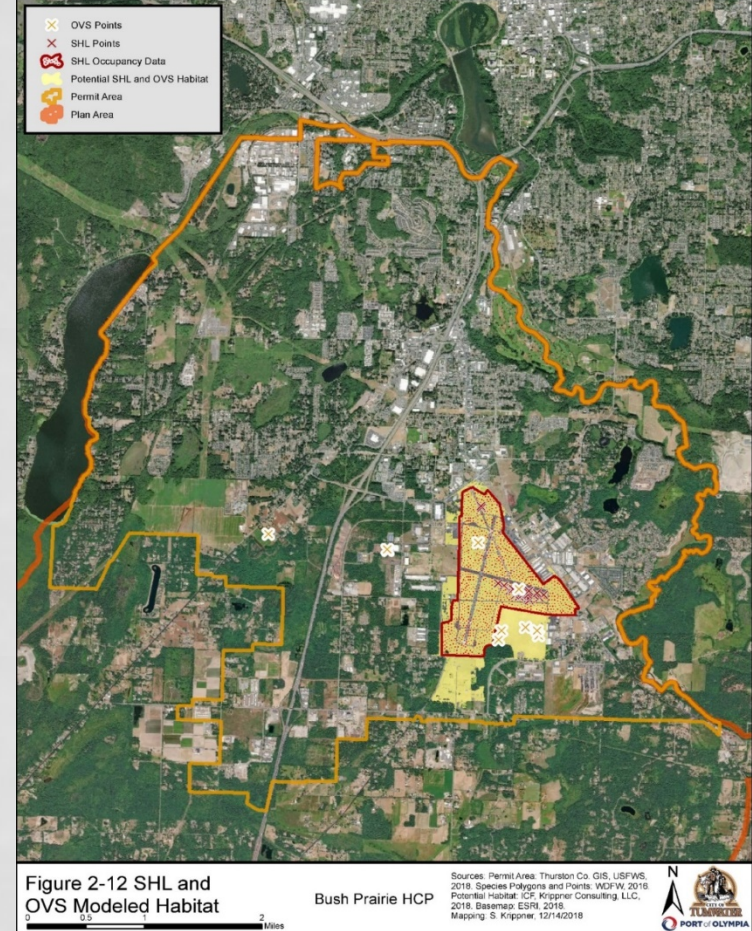
Draft Habitat Olympia Pocket Gopher



Draft Habitat Oregon Spotted Frog



- Used known occurrences
- Included adjacent lands with short grassland vegetation



Draft Habitat Lark and Sparrow



Estimated Effects

- Estimates of urban growth from the Thurston Regional Planning Council
- Estimates of development under the Port of Olympia Master Plan
- Remove areas that are unlikely to develop (e.g., development underway, mitigation lands)



- Compare areas likely to develop with assumptions about species habitat potential

**Estimated
Effects**



Estimated Effects Olympia Pocket Gopher

Modeled Habitat Type	Total Amount of Modeled Habitat in Plan Area (acres)	Maximum Amount Removed by Covered Activities in the Permit Area (acres)	Modeled Habitat Remaining in Plan Area Following Loss from Covered Activities (acres)	Percent Lost During Permit Term
Occupied	1,013	205	808	20
High Likelihood of Occupancy	1,630	734	896	45
Low Likelihood of Occupancy	4,360	628	3,732	14
Total	7,003	1,567	5,436	22

****Acreages are estimates and may change prior to completion of the HCP**



Estimated Effects **Oregon Spotted Frog**

Modeled Habitat Type	Total Modeled Habitat(acres)	Maximum Loss of Modeled Habitat (acres)	Total Habitat Remaining Following Modeled Habitat Loss (acres)	Percent of Modeled Habitat Lost
Occupied Wetlands in Permit Area	294	12	282	4
Occupied Wetlands in Plan Area	2,575	12	2,563	<0.5

****Acreages are estimates and may change prior to completion of the HCP**



**Estimated
Effects
Streaked
Horned
Lark/Oregon
Vesper Sparrow**

Modeled Habitat Type	Total Amount of Modeled Habitat in Plan Area (acres)	Maximum Amount of Modeled Habitat Lost in Permit Area (acres)	Amount of Modeled Habitat Remaining Following Habitat Loss under HCP (acres)	Percent of Modeled Habitat in Plan Area lost to Covered Activities
Suitable Habitat	663	110	553	17

****Acreages are estimates and may change prior to completion of the HCP**



- Identifying mitigation land
 - Amount
 - Criteria
 - Location
- Create biological goals and objectives for covered species

Conservation Strategy



- Outline management activities on mitigation lands that will improve habitat conditions
- Describe a monitoring program to track progress

Conservation Strategy



- Implementation of Conservation Strategy
- Mitigation land acquisition
- Land management costs
- Monitoring costs

HCP Cost Centers

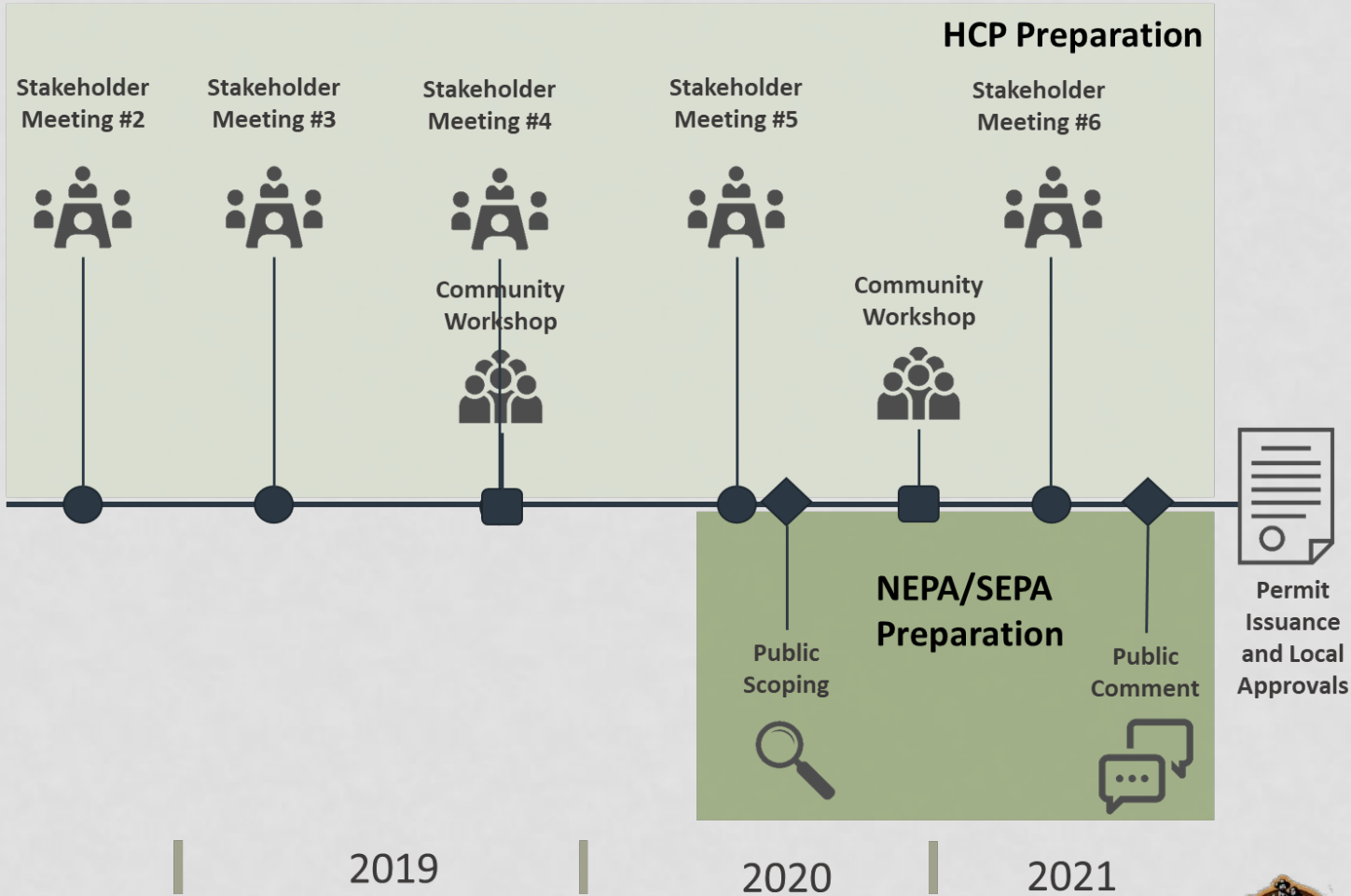


HCP Cost Centers

- Adaptive management
- HCP Administration Costs
- Endowment funding to manage mitigation lands in perpetuity
- Contingency funds to cover uncertainties



Timeline





- Continue to develop the draft HCP document
- Continue coordination with USFWS and WDFW

**What's
Next**



- Finalize take estimates and conservation need
- More fully develop implementation structure and HCP costs
- Next stakeholder meeting early 2020

**What's
Next**